

Fox Cities Exhibition Center

Weekly Update - 10/16/2017

Key Progress Points

- ◇ **Radisson Paper Valley Hotel:** MEP work continues, and installation of a steel reinforcing beam for the precast inverted T-beam is underway. Lawrence Street roadwork continues; the first portion of the roadway will be poured mid-week.

- ◇ **Steel:** Finish work continues, along with installation of miscellaneous steel including handrails, ladders, stairs, etc.

- ◇ **Concrete:** The entire exhibition floor has been poured. Work continues on the southeast plaza stairs. Martell has begun pouring the plaza deck on the south end, as well as to the north along the administration building.

- ◇ **Masonry:** Interior stone veneer around the elevator shaft walls in the bridge level area continues. The full-height wall in the pre-function area is complete. Work on the masonry column wrap continues.

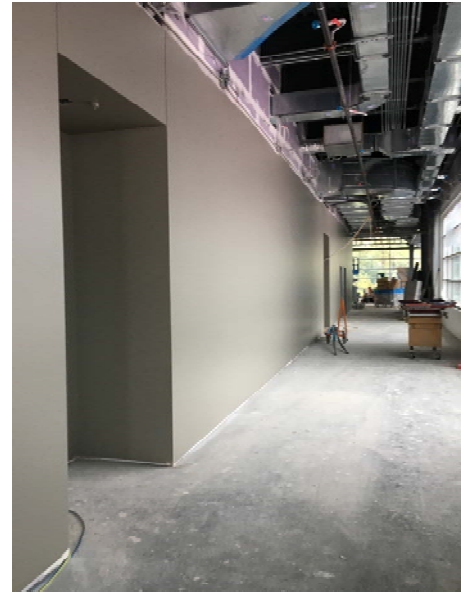
- ◇ **Miscellaneous Work:** A large amount of installation work is being done, including steel studs, exterior sheathing, vapor/air barrier, aluminum curtain wall frames, metal panels, in-wall electrical/plumbing rough-ins, overhead plumbing/HVAC/fire suppression systems, drywall, and painting.

- ◇ **Conditions & Safety:** Site conditions are good; there were no injuries this week.

Progress Photographs



Road work continues on Lawrence Street. Metal panel work is complete.



The administration area is the first to receive paint finishes, and floor tile installation has started in the bathrooms.



The exhibition floor has been poured.



Martell has begun pouring the plaza deck.