

Fox Cities Exhibition Center

Weekly Update - 10/23/2017

Key Progress Points

- ◇ **Radisson Paper Valley Hotel Work:** MEP work continues. The steel reinforcing beam for the precast inverted T-beam is complete. Lawrence Street roadwork continues and will be completed this week. Elevator installation is ongoing. Roof work nears completion on the Radisson and crosswalk bridge.

- ◇ **Steel:** Finish work and installation of miscellaneous steel continues, including handrails, ladders, stairs, etc.

- ◇ **Concrete:** The entire exhibition floor has been poured. Work continues on the southeast plaza stairs, along with concrete on the plaza deck. Sub-grade is being prepped in front of the loading dock and plaza deck for concrete. A few pours at the loading dock were also done last week.

- ◇ **Masonry:** Masons have completed their scope of work and began demobilizing from the site.

- ◇ **Miscellaneous Work:** A large amount of installation work is being done, including roofing, framing soffits, aluminum curtain wall frames, metal panels, MEP finishes, overhead plumbing/HVAC/fire suppression systems, drywall, and painting.

- ◇ **Conditions & Safety:** Site conditions are good; there were no injuries this week.

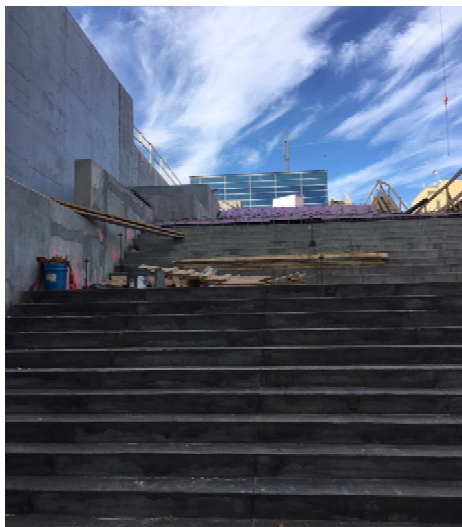
Progress Photographs



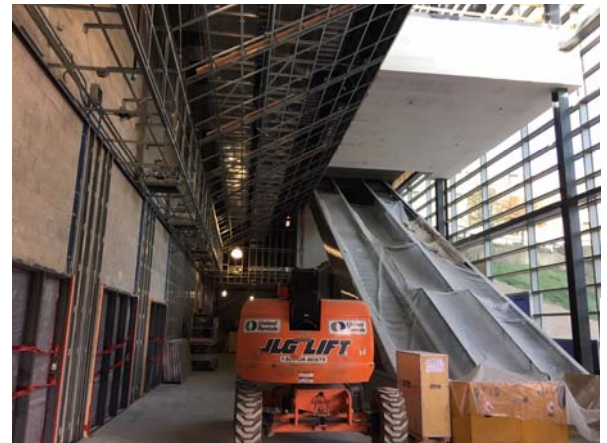
Work continues at the loading dock; the access ramp is poured and sub-grade is being prepped for concrete.



Work continues on the plaza level concrete.



The concrete crew continues to form and pour the southeast plaza stairs. The planters are complete.



Soffit work is being done in the pre-function area.