

Fox Cities Exhibition Center

Weekly Update - 10/30/2017

Key Progress Points

- ◇ **Radisson Paper Valley Hotel Work:** MEP work continues. Interior stud framing and drywall will begin soon. Lawrence Street is paved; crews will have access to the crosswalk today. Elevator installation and escalator finishes are ongoing. Roof work is complete.

- ◇ **Steel:** Finish work and installation of miscellaneous steel continues, including handrails, ladders, stairs, etc.

- ◇ **Concrete:** The entire exhibition floor is poured, and work continues on the southeast plaza stairs. Concrete on the plaza deck continues. Sub-grade is being prepped in front of the loading dock and plaza deck for concrete. The slab is poured in the walk-in cooler. A few pours at the loading dock were also done this week.

- ◇ **Masonry:** Masons have completed their scope of work.

- ◇ **Miscellaneous Work:** A large amount of installation work is being done, including roofing, framing soffits, aluminum curtain wall frames, metal panels, glazing, MEP finishes, overhead plumbing/HVAC/fire suppression systems, drywall, cooler in the kitchen, and painting.

- ◇ **Conditions & Safety:** Site conditions are good; there were no injuries this week.

Progress Photographs



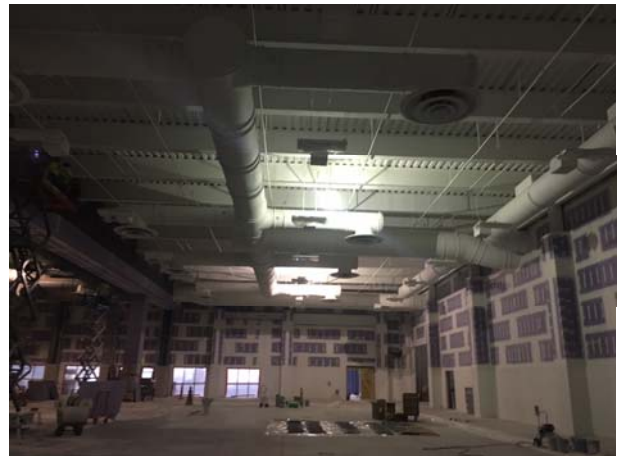
Drywall is being installed on the soffits in the pre-function area.



Work continues on the plaza deck concrete.



Site work continues at street level in front of the plaza deck. Stone base and utilities are in place, and crews are beginning to form curbs.



Painting of the exhibition ceiling began this week; pictured is the south third of the exhibition space.