

# Fox Cities Exhibition Center

## Weekly Update - 09/18/2017

---

### Key Progress Points

- ◇ **Radisson Paper Valley Hotel Work:** Roof blocking and exterior framing continues. Precast work nears completion.
  
- ◇ **Steel:** The crosswalk slab was poured, following the completion of the bridge steel. Steel decking was installed on the crosswalk roof.
  
- ◇ **Concrete:** Expo concrete slab on grade preparation continues with the installation of floor boxes and site grading. Work is being done on the stairs on the southeast side of the FCEC. The pre-function area is prepped and will be the first of the expo hall slabs to be completed.
  
- ◇ **Masonry:** Interior stone veneer around the elevator shaft walls in the bridge level area continues. Pre-function, full-height CMU walls are nearing completion.
  
- ◇ **Miscellaneous Work:** A large amount of installation work is being done, including steel studs, exterior sheathing, vapor/air barrier, aluminum curtain wall frames, metal panels, RTU curbs, in-wall electrical/plumbing rough-ins, overhead plumbing/HVAC/fire suppression systems, and drywall.
  
- ◇ **Conditions & Safety:** Site conditions are good; there were no injuries this week.

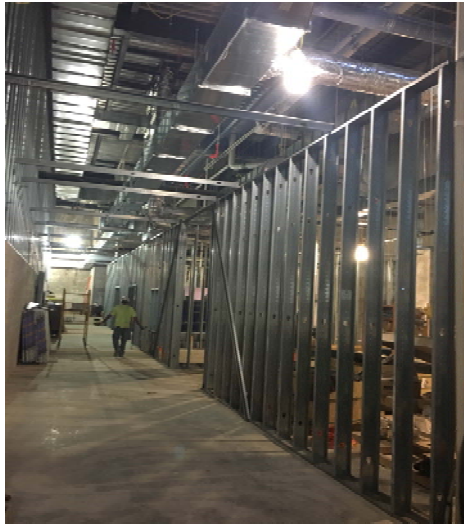
## Progress Photographs



Exterior stone veneer is complete, and masons have now started on the interior stone. The crosswalk slab is poured, and metal decking for the roof is also complete.



The administration area is the first to get drywall; more areas are soon to follow.



Steel studs are being installed in the back-of-house kitchen area. Electrical and plumbing rough-ins are also underway in this area.



Waterproofing of the plaza deck continues, which will help kick off drywall and equipment installation in the back-of-house/expo areas.